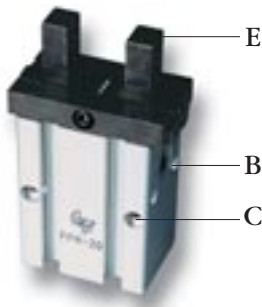


PPM PINZA PARALELA REDUCIDA SMALL PNEUMATIC GRIPPER PINCE PARALLÈLE RÉDUITE



A.- Indicada para manipular pequeñas piezas precisa y rápidamente.
B.- Diseño de doble pistón para incrementar su fuerza.
C.- Amarres versátiles: pasantes, lateral posterior..
D.- Sistema de bielas.
E.- Guías y dedos de acero tratado. Sistema de deslizamiento con rodillos cruzados: precisión y fiabilidad.



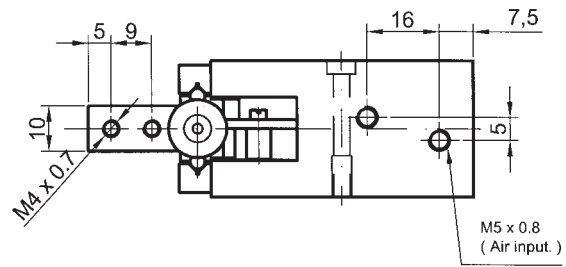
A.- Suitable to manipulate small pieces with accuracy and short cycle time.
B.- Double piston design increases gripping force.
C.- Easy setting: Thru holes, side and back holes.
D.- Lever system.
E.- Treated Steel guides and fingers. Sliding system with cross roller bearings: accuracy and reliability.



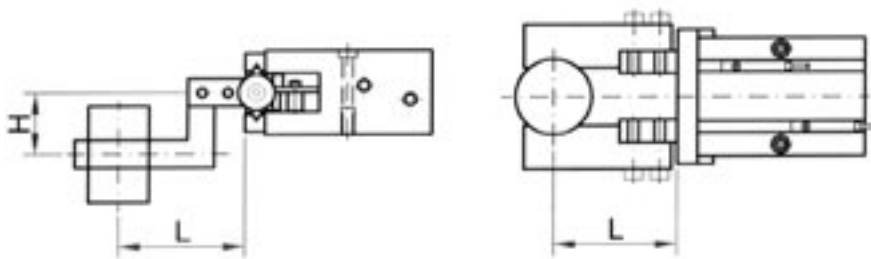
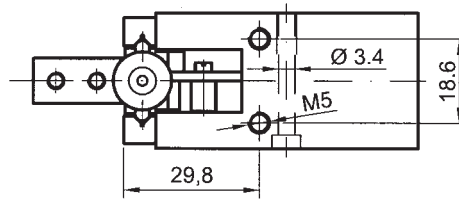
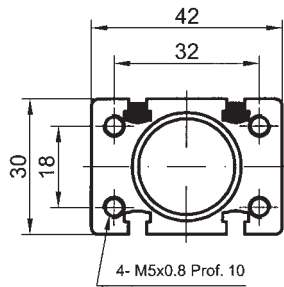
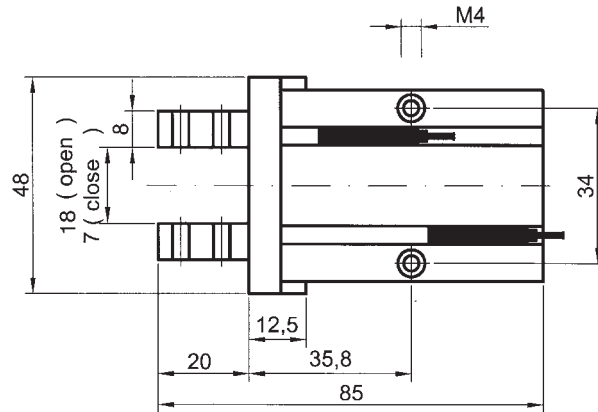
A.- Indiquée pour manipuler des petites pièces avec précision et rapidité.
B.- Conception à double piston pour augmenter sa force.
C.- Fixation: débouchants, latérales, postérieures..
D.- Système de bielles.
E.- Guides et mâchoires en acier traité. Système de glissement avec rouleaux croisés. Précision et fiabilité.

Ø	20	25	32	40
Fuerza. Force. N. 6 bar	50	70	110	185
Maximo voladizo aconsejado. Max. fingers length. Saillie maximum conseillée mm	45	60	70	75
Carrera. Stroke. Course. mm	11	13.5	21	21
Peso. Weight. Poids. Kg.	0.231	0.379	0.723	0.860
Lubrication. Lubricacion. Entretien	Not required. No requiere. Non nécessaire			
Repetitibilidad. Repeatability. Répétabilité. mm	± 0.03			
Ciclos por minuto. Max. Operating cycles per min. Cycles par minute	180			
Temperature range. Temperatura de trabajo. Température de travail	-10 °C + 70°C			
Referencias How to order Référence de commande	Ejemplo. Exemple. PPM-20 - $\begin{bmatrix} \text{DC 22} \\ \text{DC1N} \end{bmatrix} \cdot 2$			
	PPM - Parallel gripper. Pinza paralela. Pince parallèle			
	20- Diámetro. Diametre.			
	DC 22: Detectores. Detectores. Senseurs (pag. 93)			
	2: Detectores quantity. Cantidad de detectores. Quantité de détecteurs			

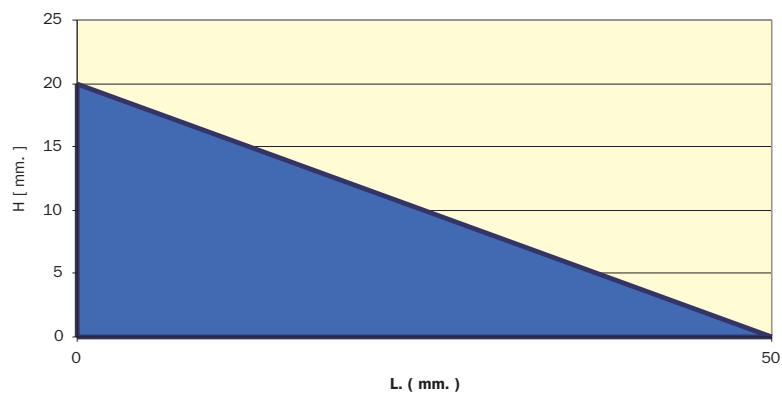
PPM-20

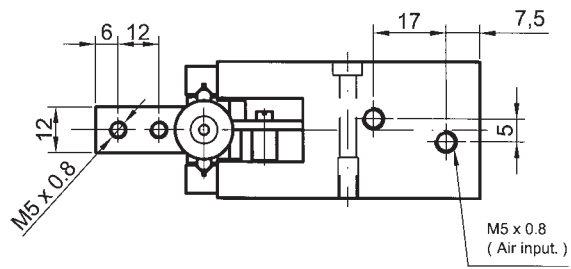


Fuerza Force } 50 N

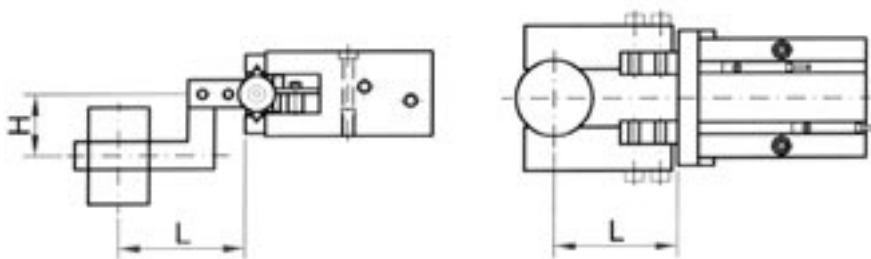
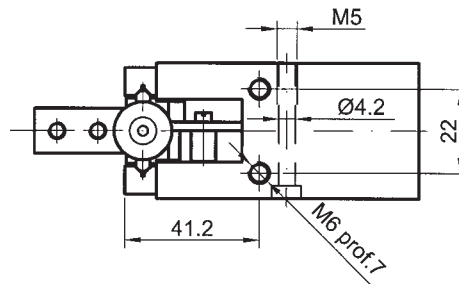
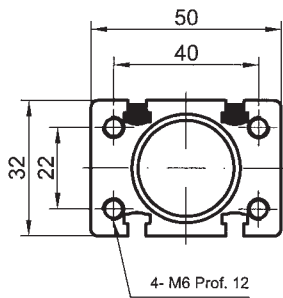
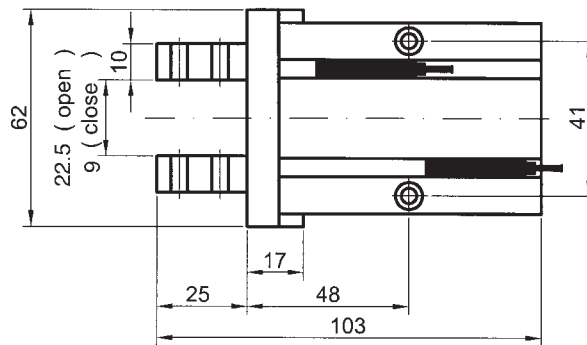


WORK AREA - AREA DE APLICACION

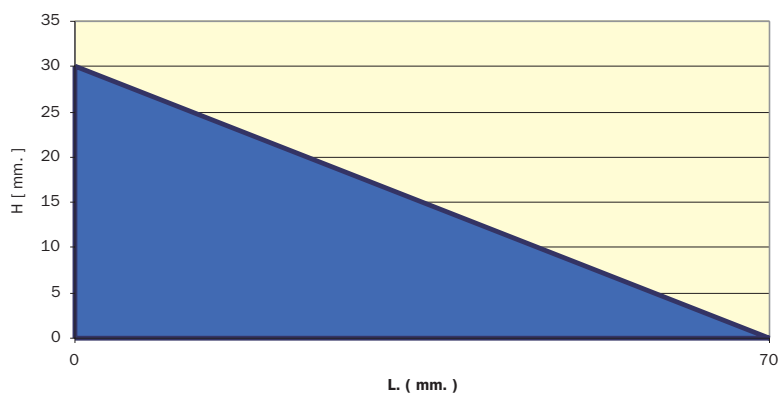


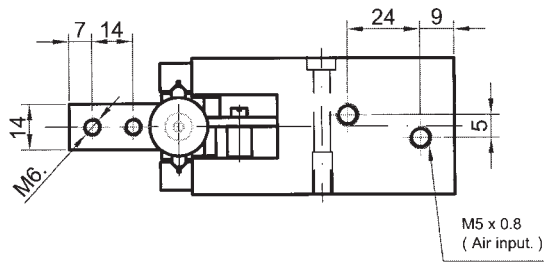


Fuerza Force } 70 N

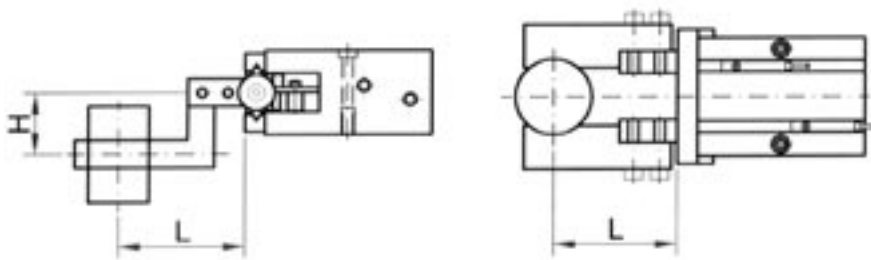
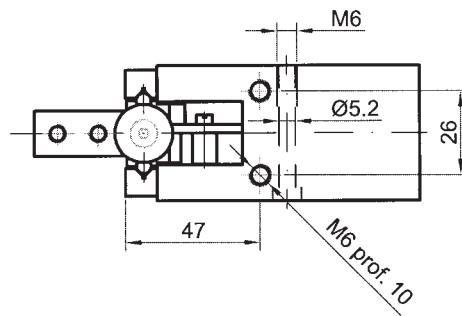
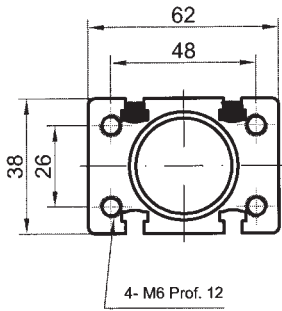
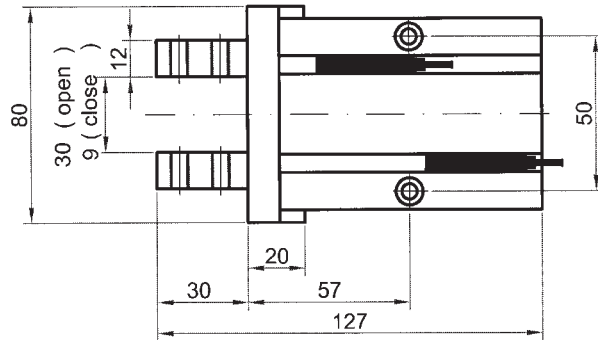


WORK AREA - AREA DE APLICACION

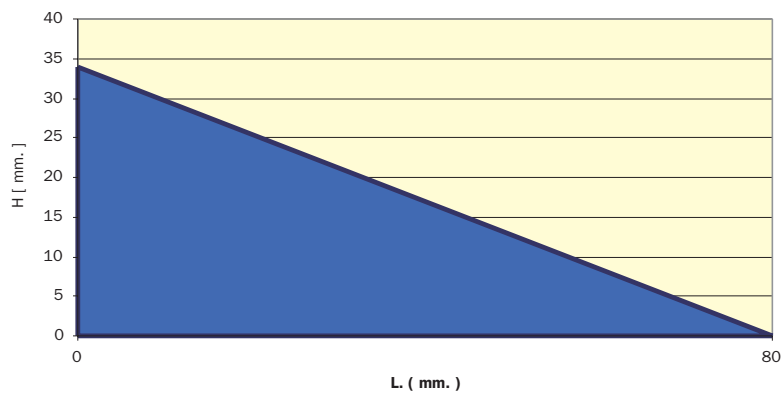


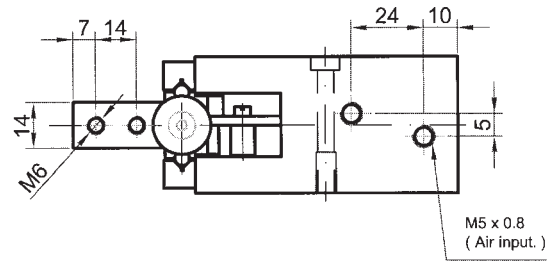


Fuerza Force } 110 N

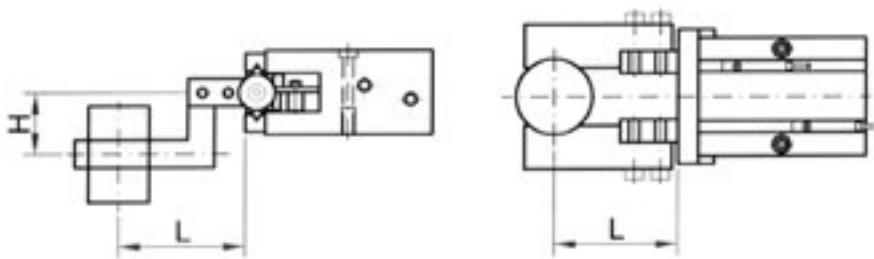
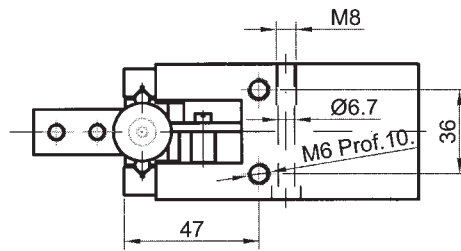
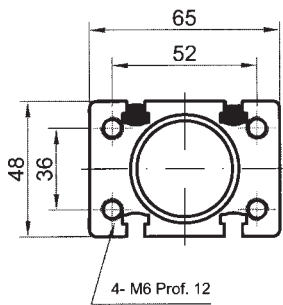
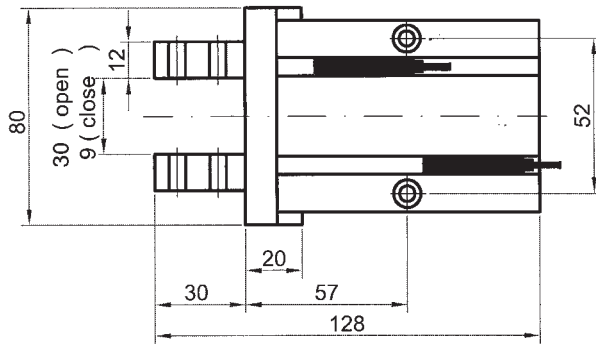


WORK AREA - AREA DE APLICACION





Fuerza Force } 185 N



WORK AREA - AREA DE APLICACION

